

汽油机零部件图册



领跑未来

THE SCIENCE AND TECHNOLOGY
SHIFT THE FUTURE

PARTS CATALOGUE FOR ENGINE

YX1P56FMJ(W063)



 银翔集团
YINXIANG GROUP
은상그룹

重庆银翔摩托车(集团)有限公司
CHONGQING YINXIANG MOTORCYCLE (GROUP) CO., LTD.

说 明 (PREFACE)

感谢您选购银翔集团 YX1P56FMJ 型发动机, 我公司真诚希望您对该机型的设计、制造、质量等方面提出宝贵的意见和建议, 并及时通知我们, 以便改进。YX1P56FMJ 型发动机是我公司自主研发的一款赛车专用发动机, 该发动机具有重量轻, 动力强劲, 高速性能极佳等优点。

《YX1P56FMJ 汽油机零部件图册》是我公司为了方便客户订购零部件与维修而精心编制而成, 该图册包括该机型的所有零部件的基本情况。该图册所标明的数据、说明和规格是根据该机型目前最新设计而确定的, 我公司将不断对自己的产品进行改进与提高, 该图册上部分零部件编码 (Part No.) 可能与实际机型有些差别, 订购维修配件请以序号 (Ref.No) 为准。如有更改, 恕不另行通知, 敬请予以谅解。

重庆银翔摩托车 (集团) 有限公司设在各地的维修站点将为您提供高质量的技术咨询、指导和售后服务。

《YX1P56FMJ 汽油机零部件图册》版权归重庆银翔摩托车 (集团) 有限公司所有, 未经本公司书面同意, 任何团体和个人不得非法翻印或复制, 否则我公司将追究法律责任。

Thank you for your purchasing Yinxiang group products: YX1P56FMJ engine. And appreciate you can give us your suggestion for design, if you have. YX1P56FMJ engine is a special racing bicycle engine designed by our company. Compared to the same kind model, YX1P56FMJ is more light weight, large power and high speed.

<YX1P56FMJ engine spare parts catalogue> is used for spare parts order and maintain, which contains all the spare parts of the machine. The data, specification is according to our newest design, and we will continue to promote our products. So, it may be some difference between the catalogue and the machine you buy. If there is any amendment of our machine, we won't give you another special notice, thank you for your attention.

Chongqing Yinxiang Motorcycle (group) Co., Ltd. Have maintain station in some city in china They will give you professional technical advice, instruction and after service.

The copyright of <YX1P56FMJ engine spare parts catalogue> is belong to Chongqing Yinxiang Motorcycle (group) Co., Ltd. Without document authorization, any organization and individual can't pirate or copy, otherwise we will call to account.

重庆银翔摩托车 (集团) 有限公司

Chongqing Yinxiang Motorcycle (Group) Co., Ltd

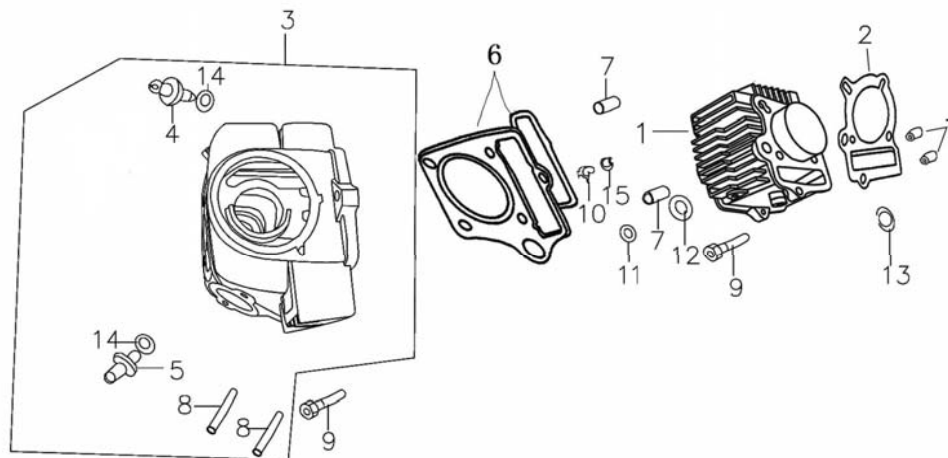
二〇〇七年十月 (Oct., 2007)

编制	周舰	校对	王树贵	批准	吴丹
----	----	----	-----	----	----

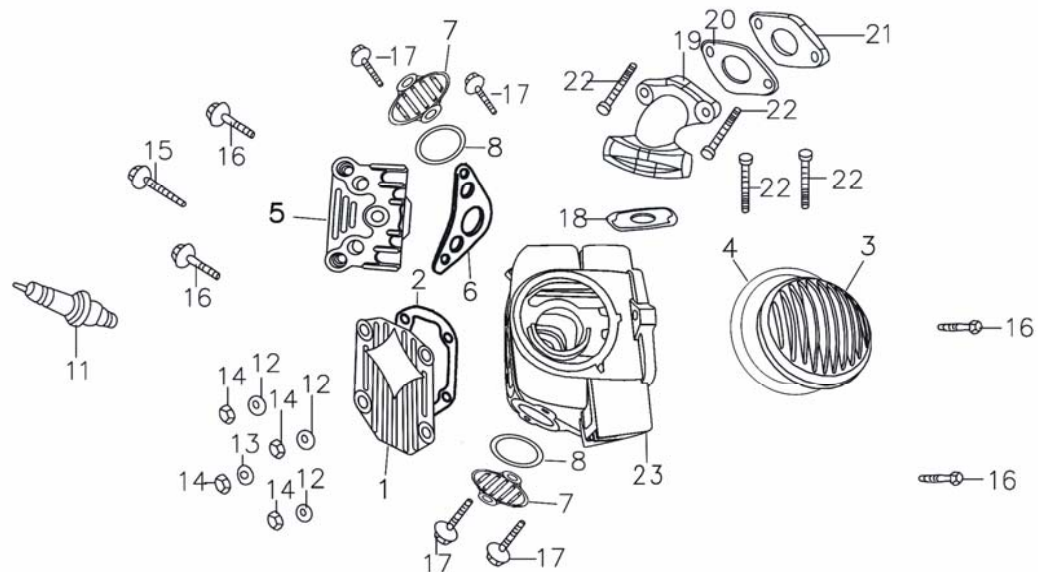
目 录

(INDEX TO ENGINE GROUP)

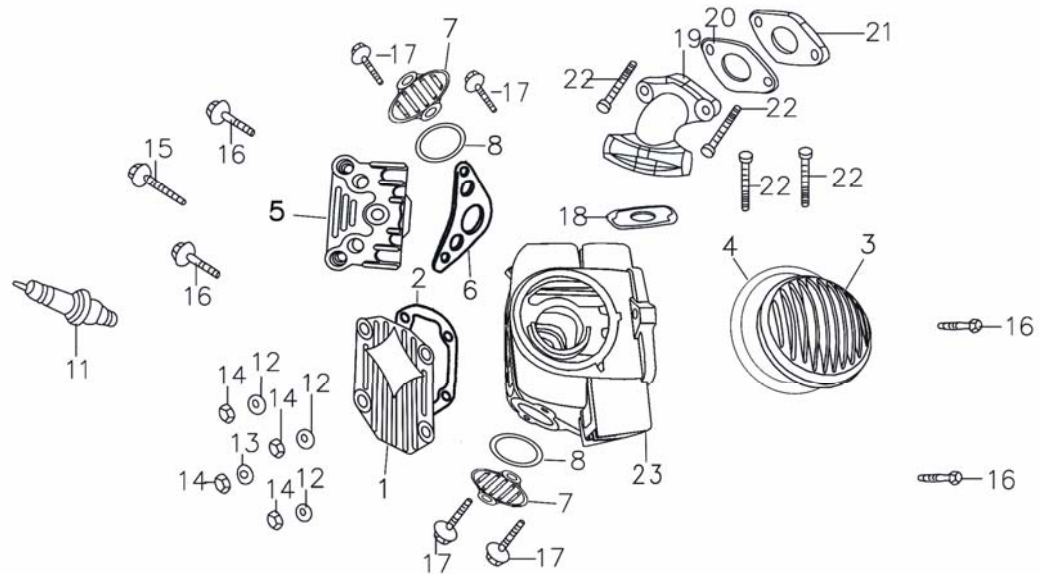
E-1	气缸组件	1
	CYLINDER ASSY	
E-2	气缸头	2
	Cylinder Head	
E-3	凸轮轴总成	4
	CAMSHAFT ASSY	
E-4	时规链	5
	TIME CHAIN	
E-5	左、右箱体	6
	CRANKCASE	
E-6	曲轴总成	7
	CRANKSHAFT	
E-7	右边盖	8
	CRANKCASE COVER	
E-8	左曲轴箱盖 磁电机	9
	Left Crankcase Cover & Magnetio	
E-9	离合器组件	10
	CLUTCH COMPONENT PART	
E-10	变速鼓组件	11
	SHIFTING MOTIVATOR	
E-11	起动机轴组合	13
	START ASSY	
E-12	主、副轴组件	14
	SLOWING DOWN SUBASSEMBLY	
E-13	油泵总成	16
	PUMP ASSY	
E-14	平衡轮组件	17
	BALANCE WHEEL ASSY	



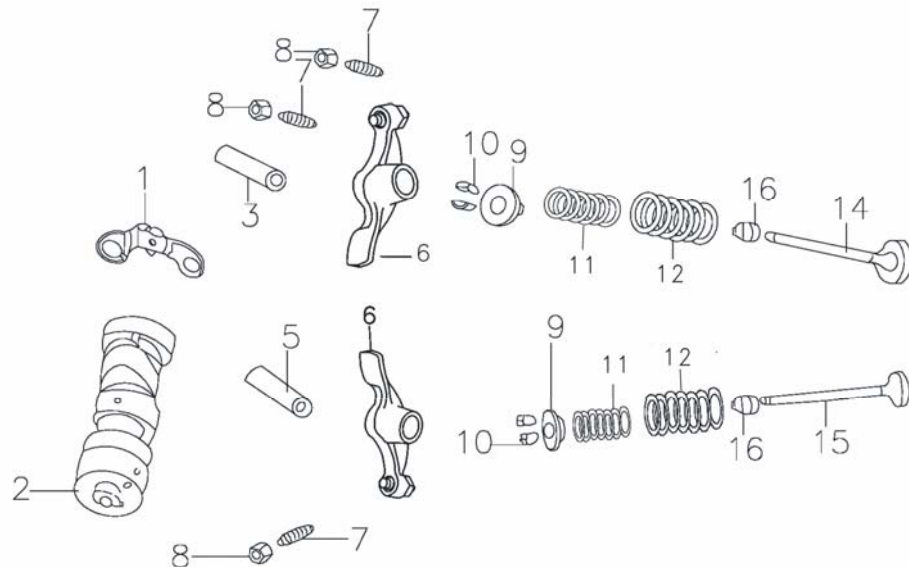
序号 Ref. No.	零部件编码 Part No.	零部件名称	Description	数量 Quantity	备注 Remark
1	2081A038	气缸体	CYLINDER BODY	1	
2	208B010	气缸体密封垫	CYLINDER BODY SEAL PACKING	1	
3	208A000	气缸头组件	CYLINDER HEAD ASSY	1	
4	D00A001	进气门导管	SUCTION-VALVE PIPE	1	
5	D00A002	排气门导管	EXHAUST VALVE PIPE	1	
6	208B008	气缸头密封垫组件	CYLINDER HEAD SEAL GASKET	1	
7	97010012	定位销 10×12	ASSEMBLING PIN 10 ×12	4	
8	208M036	双头螺栓M6×38	BOLT M6×38	2	
9	GB5783	螺栓	BOLT	3	
10	D00L040	衬套	OIL SEAL	1	
11	208-1-11	衬套	OIL SEAL	1	
12	D00L033	矩形密封圈	RECTANGLE SEAL PING	1	
13	D00L035	矩形密封圈	RECTANGLE SEAL PING	1	
14	D00C047	导管O型圈9×1.6	O-Ring 9×1.6	2	
15	208-1-15	密封条	SEAL LVASHER	1	



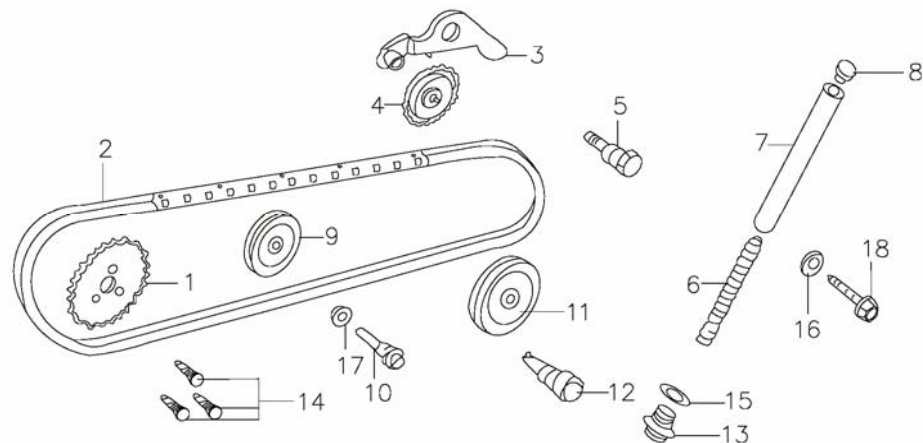
序号 Ref. No.	零部件编码 Part No.	零部件名称	Description	数量 Quantity	备注 Remark
1	208A036	气缸头盖	CYLINDER HEAD COVER	1	
2	206B009	气缸头盖密封垫	CYLINDER HEAD COVER SEAL PACKING	1	
3	208A033	气缸头左盖	CYLINDER HEAD LEFT COVER	1	
4	E03B006	气缸头左盖密封圈	CYLINDER HEAD LEFT COVER SEAL PACKING	1	
5	208A035	气缸头右盖	CYLINDER HEAD RIGHT COVER	1	
6	D00B007	气缸头右盖密封圈	CYLINDER HEAD RIGHT COVER SEAL RING	1	
7	208A032	气门盖	VALVA COVER	2	
8	D00C058	气门盖密封圈	SEAL FOR INTAKE VALVE	2	
11	D001D021	NGK 火花塞	NGK SPARKING PLUG	1	
12	E03L016	垫圈	CUSHION RING	3	
13	E03L008	垫圈	CUSHION RING	1	
14	923H070000BCR	螺母	NUT	4	
15	GB5787	螺栓	BOLT	1	
16	GB70	内六角螺栓	SCREW	4	



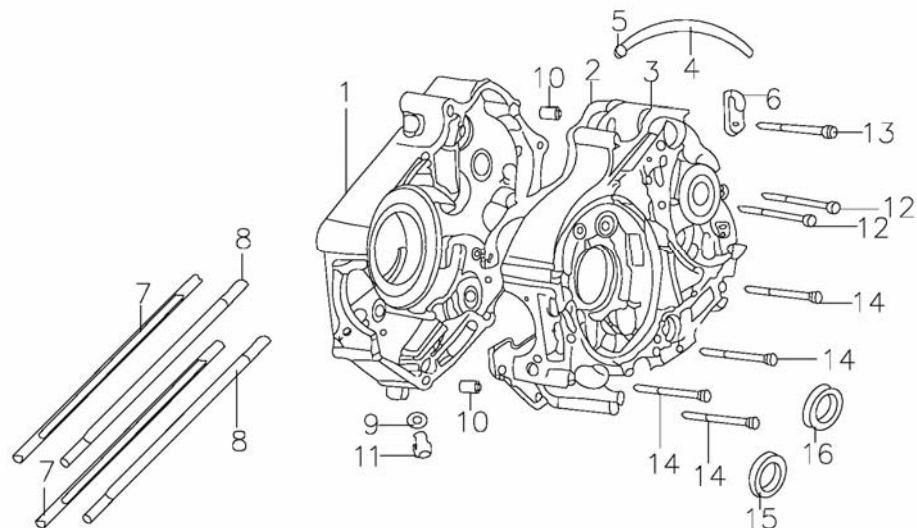
序号 Ref. No.	零部件编码 Part No.	零部件名称	Description	数量 Quantity	备注 Remark
17	GB5787	带盘螺栓	PLATE BOLT	6	
18	208B030	进气管密封垫	SEAL PACKING FOR THE INTAKE	1	
19	L00JQ214	进气管	INTAKE	1	
20	F001B014	密封垫	SEAL PACKING	1	
21	F00C039	隔热垫	CARBURETOR SEAL PACKING	1	
22	GB5787	带盘螺栓	PLATE BOLT	4	
23	208A000	气缸头总成	CYLINDER HEAD ASSY	1	



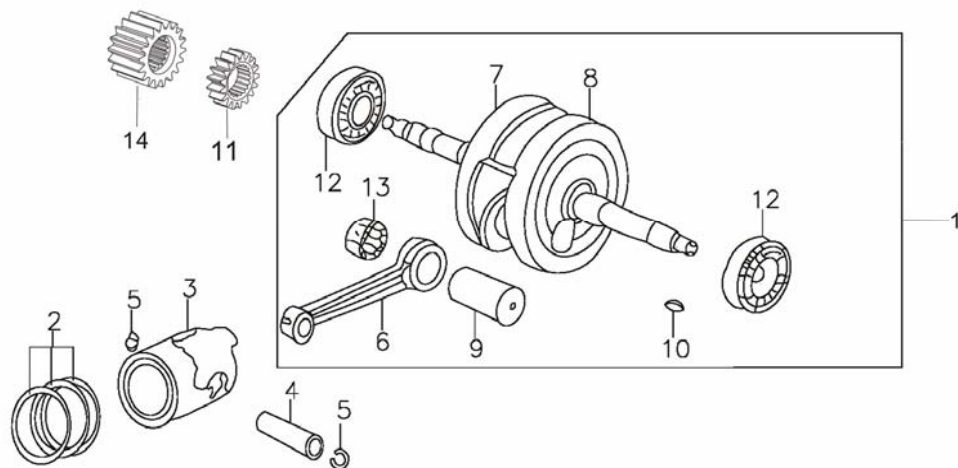
序号 Ref. No.	零部件编码 Part No.	零部件名称	Description	数量 Quantity	备注 Remark
1	D00F013	单向器锁止板组合	ISOLATOR LOCKER ASSEMBLY	1	
2	208F020	凸轮轴组件	CAMSHAFT SUBASSEMBLY	1	
3	D00F015	进气摇臂轴	AIR-IN ROCKERARM SHAFT	1	
5	D00F015	摇臂轴	ROCKERARM SHAFT	1	
6	D00F000	气门摇臂	ROCKER ARM, VALVE	2	
7	A00F001	气门调节螺钉	AIR VALVE ADJUSTING SCREW	2	
8	A00F002	气门调节螺母	AIR VALVE ADJUSTINF NUT	2	
9	D00F034	气门内外弹簧座	UP SPRING SEAT	2	
10	D00F033	气门锁夹	AIR VALVE LOCKER	2	
11	208H004	气门内弹簧	INNER SPRING, VALVE	2	
12	208H003	气门外弹簧	OUTER SPRING, VALVE	2	
14	208F045	进气门	INDUCTION VALVE	1	
15	208F039	排气门	EXHAUST VALVE	1	
16	D00C043	油封	VALVE STEM SEAL	2	



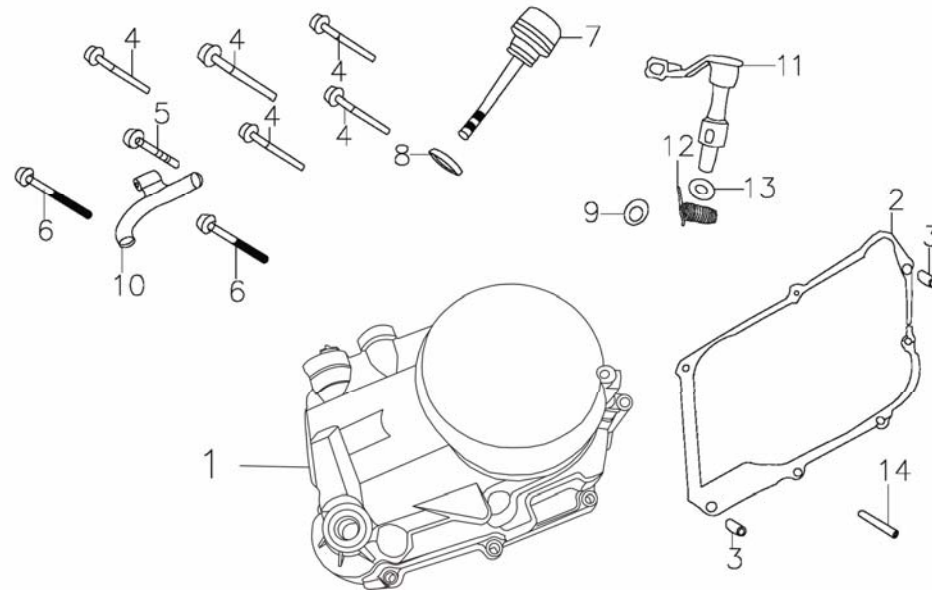
序号 Ref. No.	零部件编码 Part No.	零部件名称	Description	数量 Quantity	备注 Remark
1	208F011	正时从动链轮	TIMING DRIVEN SPROCKET	1	
2	E03F012	正时链条	TIMING CHAIN	1	
3	D00F043	链条张紧臂组件	CHAIN TENSION ARM SUBASSEMBLY	1	
4	D00C020	链条张紧滚轮组合	CHAIN TENSION CONTACT ROLLER ASSEMBLY	1	
5	D00F044	链条张紧臂芯轴	CHAIN TENSION ARM MANDREL	1	
6	D00H006	链条张紧杆弹簧	CHAIN TENSION STUD SPRING	1	
7	D00F042	链条张紧杆组件	CHAIN TENSION STUD SUBASSEMBLY	1	
8	D00C022	链条张紧杆头	CHAIN TENSION STUD HEAD	1	
9	E03C023	无芯导向轮	GUIDE WHEEL WITHOUT CORE	1	
10	D00F048	导向滚轮销	GUIDE ROLLER PIN	1	
11	E04C021	链条张紧滚轮 2	CHAIN TENSION CONTACT ROLLER II	1	
12	E04F041	链条张紧滚轮 2 销轴	CHAIN TENSION CONTACT ROLLER II PIN	1	
13	D00E025	密封螺栓	SEAL BOLT	1	
14	578305012	六角螺栓M5×12	BOLT M5×12	3	
15	D00L021	铝垫圈14	ALUMINIUM WASHER 14	1	
16	208-4-16	垫圈	WASHER	1	
17	D00L019	铝垫圈8	ALUMINIUM WASHER 8	1	
18	D00L020	螺栓	BOLT	1	



序号 Ref. No.	零部件编码 Part No.	零部件名称	Description	数量 Quantity	备注 Remark
1	208A020	右曲轴箱体	RIGHT CRANKCASE BODY	1	
2	E13B005	曲轴箱密封垫	CRANKCASE SEALED PACKING	1	
3	208A010	左曲轴箱体	LEFT CRANKCASE BOGY	1	
4	F00C024	通气管	BREATHING PIPE	1	
5	D00L014	溢流管夹	OVERFLOW PIPE CLIP	1	
6	D00L039BCR	高压线夹	PIPE CLAMPING	1	
7	206M001	汽缸双头螺栓 A	CYLINDER TRAPPED STUD(A)	2	
8	206M002	汽缸双头螺栓 B	CYLINDER TRAPPED STUD (B)	2	
9	D00L021	垫圈	WASHER	1	
10	97010014	定位销	ASTEMBLING PIN	2	
11	D00E026BX	放油螺栓	DISCHARGING OIL PLUG SCREW	1	
12	GB5787	螺栓	BOLT	2	
13	GB5787	螺栓	BOLT	1	
14	GB5787	螺栓	BOLT	4	
15	D001C008	油封	WASHER	1	
16	D00C026	油封	WASHER	1	

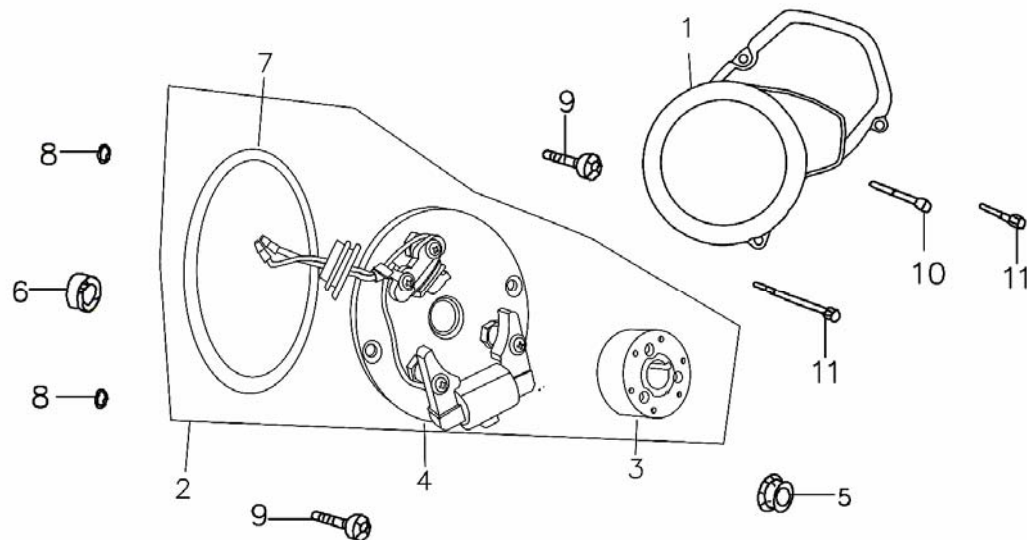


序号 Ref. No.	零部件编码 Part No.	零部件名称	Description	数量 Quantity	备注 Remark
1	208J000	曲柄连杆组件	CRANK CONNECTING ROD	1	
2	208J013	活塞环组合	PISTON RING SET	1	
3	208J014	活塞	PISTON	1	
4	208J012	活塞销	PISTON PIN	1	
5	D00J011	活塞销挡圈	PISTON PIN SHIELD RING	2	
6	208J025	连杆	CONNECTING ROD LEVEL	1	
7	208J005	右曲柄	RIGHT-HAND CRANKSHAFT	1	
8	208J006	左曲柄	LEFT-HAND CRANK SHAFT	1	
9	208J007	曲柄销	CRANK PIN	1	
10	208J001	半圆键	SEMICIRCULAR KEY	1	
11	E13E023	油泵驱动齿轮	OIL PUMP DRIVER GEAR	1	
12	6304/P6	轴承	BEARING	2	
13	208J008	连杆大头轴承	BEARING	1	
14	D04K015	主动齿轮	PRIMARY DRIVER GEAR	1	

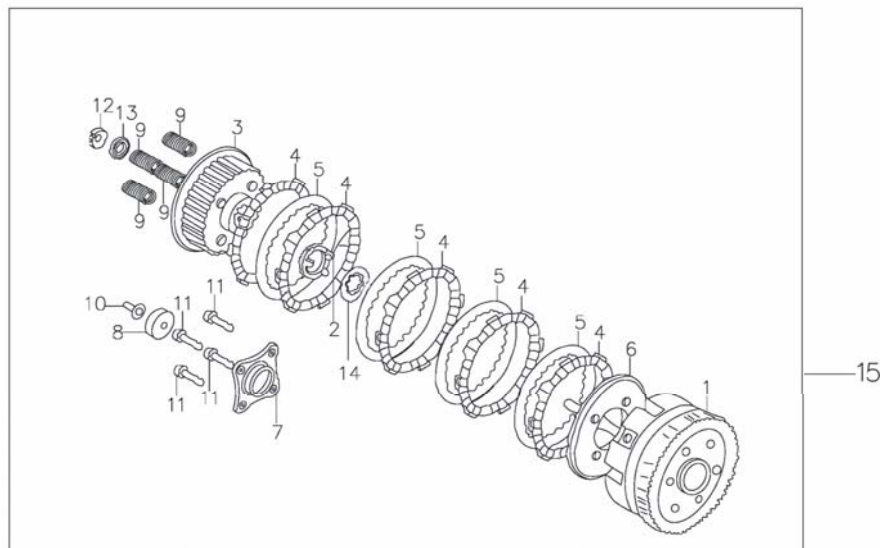


序号 Ref. No.	零部件编码 Part No.	零部件名称	Description	数量 Quantity	备注 Remark
1	E13A034	右曲轴箱盖	RIGHT CRANKCASE COVER	1	
2	E13B002	密封垫	RIGHT CRANKCASE SEALED	1	
3	97108012	定位销	PITCHED PIN	2	
4	GB5787	螺栓	BOLT	5	
5	GB5787	螺栓	BOLT	1	
6	GB5787	螺栓	BOLT	2	
7	D00C038	机油标尺组合	OIL SCALE ASSEMBLY	1	
8	D00C060	O 型密封圈	O-SHAPED SEALED RING	1	
9	D00C016	油封	OIL SEAL	1	
10	E13L031	离合器拉索定位支架	CLUTCH CABLE CLIP	1	
11	E13G010BCR	离合器操纵杆	CLUTCH CONTROL LEVER	1	
12	E13H007	操纵杆复位弹簧	CONTROL LEVER RETURN SPRING	1	
13	F04C030	油封	OIL SEAL	1	
14	208-7-14	增油导管	OIL PIPE	1	

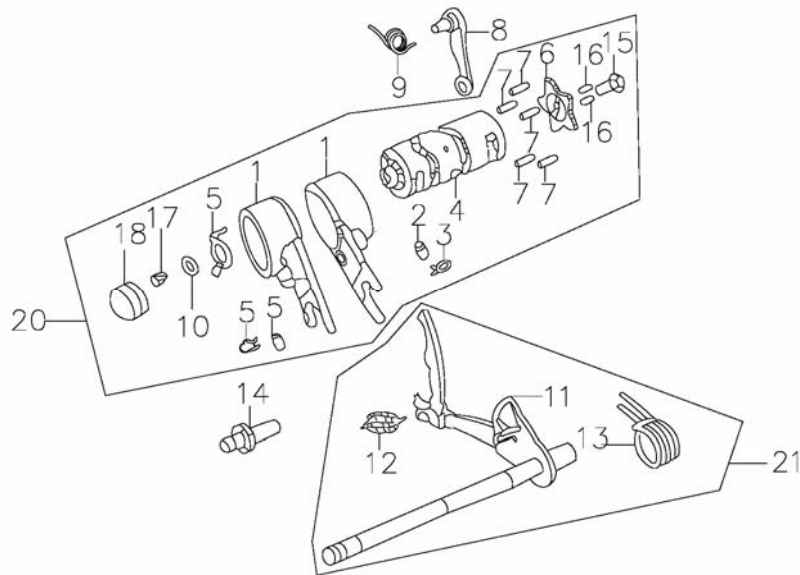
E-8 左曲轴箱盖 磁电机 Left Crankcase Cover & Magneto



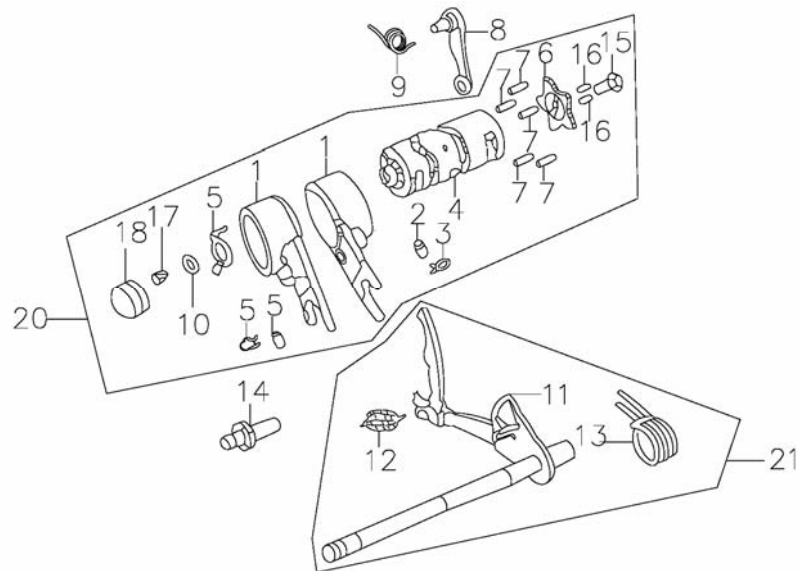
序号 Ref. No.	零部件编码 Part No.	零部件名称	Description	数量 Quantity	备注 Remark
1	A019A070	左箱盖	LEFT CRANKCASE COVER	1	
2	208D050	磁电机总成	MAGNETON	1	
3	208D060	磁电机转子	FLYWHEEL	1	
4	208D070	磁电机定子	STATOR MODULE	1	
5	617710000BCR-1	六角螺母	HEX NUT	1	
6	D00C028	油封	OILE SEAL	1	
7	D001C062	O型密封圈	O-SHAPED SEAL	1	
8	F002C048	O型密封圈	O-SHAPED SEAL	1	
9	GB819	螺钉6X16	BOLT	2	
10	GB5787	螺栓	BOLT	1	
11	GB5787	螺栓	BOLT	2	



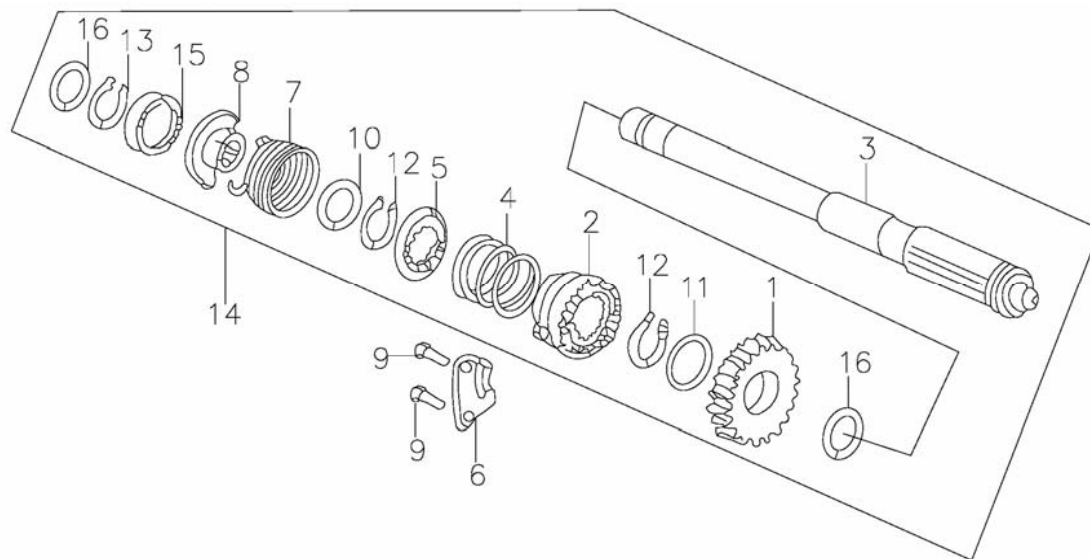
序号 Ref. No.	零部件编码 Part No.	零部件名称	Description	数量 Quantity	备注 Remark
1	208-9-1	离合器外罩组合	CLUTCH EXTERNAL ASSY	1	
2	208-9-2	定位环	HOLDING RING	1	
3	208-9-3	离合器中心套	CENTRE OF CLUTCH COVER	1	
4	208-9-4	离合器磨擦盘	CLUTCH FRICTION DISK	5	
5	208-9-5	离合器板	CLUTCH BOARD	4	
6	208-9-6	离合器压盘	CLUTCH PRESSURE PLATE	1	
7	208-9-7	离合器升板	CLUTCH LIFT SLAB	1	
8	208-9-8	轴承	BEARING	1	
9	208-9-9	离合器弹簧	CLUTCH SPRING	4	
10	208-9-10	离合器推杆	CLUTCH PUSH ROD	1	
11	208-9-11	螺栓	BOLT	4	
12	208-9-12	圆螺母	ROUND NUT	1	
13	208-9-13	碟型垫圈	DISK SHAPED WASHER	1	
14	208-9-14	花键垫圈	SPLINE SHAFT WASHER	1	
15	206G000	离合器总成	CLUTCH ASSEMBLY	1	



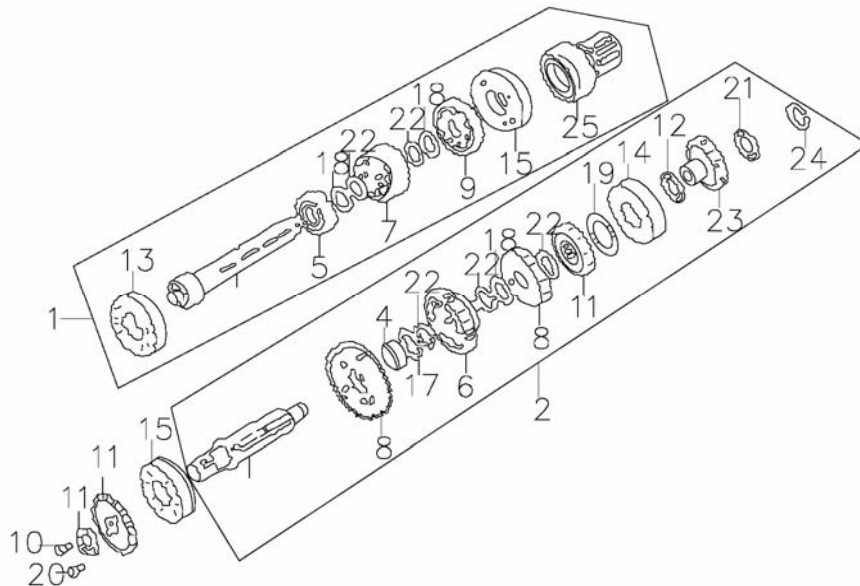
序号 Ref. No.	零部件编码 Part No.	零部件名称	Description	数量 Quantity	备注 Remark
1	208-10-1	齿轮拨叉	GEAR SHIFT FORK	2	
2	208-10-2	导向销	GUIDE PIN	1	
3	208-10-3	弹簧夹	SPRING CLIP	1	
4	A00K066	变速鼓	SHIFTING DRUM	1	
5	A00D010	空档开关接触片	NEUTRAL GEAR SWITCH CONTACT	1	
6	A00K023	五星板	SPEED VARIATOR STRONGBACSTRONGBACK PIN	1	
7	208-10-7	定位板销钉	STRONGBACK PIN BOLT	5	
8	2081K070	变速鼓定位板组件	SPEED VARIATOR STRONGBACK SUBASSEMBLY	1	
9	D00H009	定位板弹簧	STRONGBACK SPRING	1	
10	A00K062	垫圈	WASHER	1	
11	208-10-11	变档轴	SHIFTING SUBASSEMBLY	1	
12	208-10-12	弹簧	SPRING	1	
13	208-10-13	复位弹簧	RETURN SPRING	1	
14	D00K024	定位螺栓	ASSEMBLING SPING	1	
15	GB5787	带盘螺栓	BOLT WITH SALVER	1	
16	208-10-16	定位销	ASSEMBLING PIN	2	



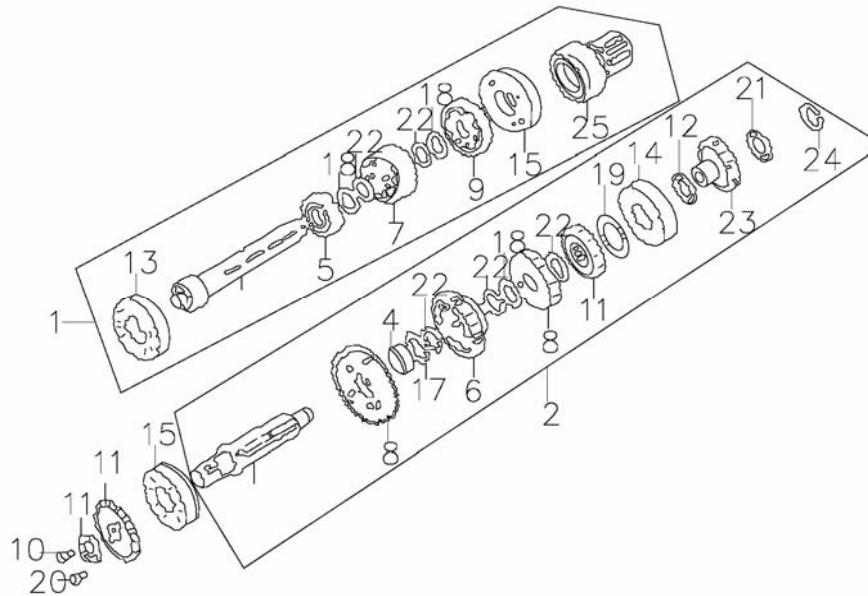
序号 Ref. No.	零部件编码 Part No.	零部件名称	Description	数量 Quantity	备注 Remark
17	A00L033	开关压板	SWITCH PRESSBOARD	1	
18	A00K082	动触头组合	MOVING CONTACT SUBASSEMBLY	1	
19	208-10-19	内六角螺栓	SOCKET HEAD CAP SCREW	1	
20	A004K060	变速鼓组合	SHIFTING YOKE VARIATOR	1	
21	C032K000	换档臂组件	SHIFTING SUBASSEMBLY	1	



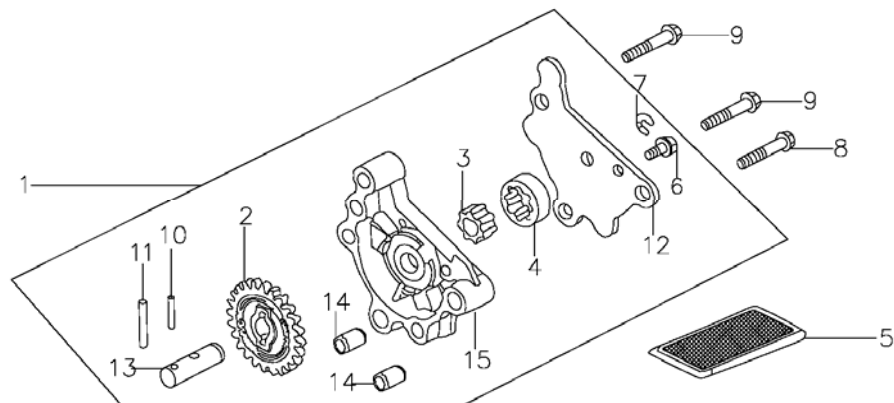
序号 Ref. No.	零部件编码 Part No.	零部件名称	Description	数量 Quantity	备注 Remark
1	208K025	起动齿轮	START GEAR	1	
2	208-11-2	起动棘轮	STARTING RATCHET WHEEL	1	
3	208-11-3	起动轴	STARTING SHAFT	1	
4	208-11-4	弹簧	SPRING	1	
5	208-11-5	棘轮弹簧座	RATCHET WHEEL SPRINGS SUPPORTING	1	
6	208-11-6	棘轮导向板	RATCHET WHEEL GUIDE RUNNER	1	
7	208-11-7	起动轴复位弹簧	STARTING SHAFT RETURN SPRING	1	
8	208-11-8	起动轴弹簧座	STARTING SHAFT SPRING SUPPORTING	1	
9	GB5783	螺栓	BOLT	2	
10	208-11-10	垫圈	WASHER	1	
11	208-11-11	垫圈	WASHER	2	
12	208-11-12	垫圈	WASHER	3	
13	208-11-13	护挡圈	SHIELD RING	1	
14	208I000	起动轴组合	STARTING SHAFT ASSEMBLY	1	
15	208-11-15	弹簧盖	SPRING COVER	1	
16	208-11-16	垫圈	WASHER	2	



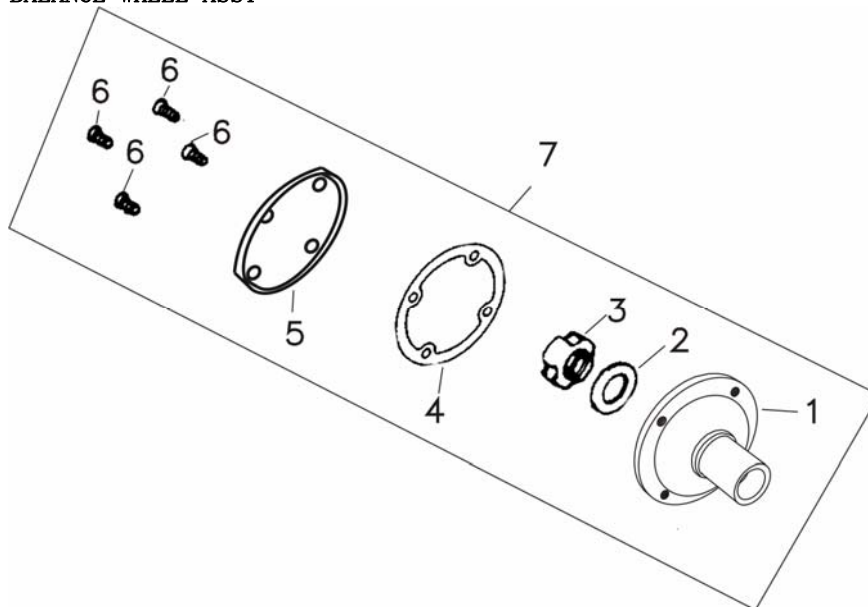
序号 Ref. No.	零部件编码 Part No.	零部件名称	Description	数量 Quantity	备注 Remark
1	E13K030	传动主轴 (不含轴承)	TRANSMISSION MMAIN SHAFT	1	
2	E13K040	传动副轴 (不含轴承)	TRANSMISSION COUNTENSHAFT	1	
3	208-12-3	齿轮	GEAR WHEEL	1	
4	208-12-4	齿轮套	GEARED SLEEVE	1	
5	208-12-5	齿轮	GEAR WHEEL	1	
6	208-12-6	花键从动齿轮	SPLINE SHAFT DRIVER GEAR	1	
7	208-12-7	花键主动齿轮	SPLINE SHAFT MAIN DRIVEN GEAR	1	
8	208-12-8	齿轮	GEAR WHEEL	1	
9	208-12-9	齿轮	GEAR WHEEL	1	
10	208-12-10	花键齿轮	SPLINE SHAFT GEAR WHEEL	1	
11	A001K014	主动链轮	DRIVE SPROCKET	1	
12	208-12-12	主动链轮卡圈	SRIVE SPROCKET CLOSING RING	1	
13	6001	轴承	BEARING	1	
14	6002	轴承	BEARING	1	
15	6203	轴承	BEARING	2	
16	208-12-16	推力垫圈	THRUST WASHER	1	



序号 Ref. No.	零部件编码 Part No.	零部件名称	Description	数量 Quantity	备注 Remark
17	208-12-17	花键垫圈	SPLINE SHAFT WASHER	1	
18	208-12-18	花键垫圈	SPLING SHAFT WASHER	3	
19	208-12-19	花键垫圈	SPLING SHAFT WASHER	2	
20	208-12-20	螺栓	BOLT	2	
21	208-12-21	推力垫圈	SPLING SHAFT WASHER	1	
22	208-12-22	挡圈	SHIELD RING	5	
23	208-12-23	起动过桥齿轮	STAR ROLLING GEAR	1	
24	208-12-24	挡圈 15	SHIELD RING	1	
25	208K036	离合器齿轮套	CLITCH GEAR SLEEVE	1	



序号 Ref.No.	零部件编码 Part No.	零部件名称	Description	数量 Quantity	备注 Remark
1	E13E000	机油泵部件	OIL PUMP COMPONENTS	1	
2	208-13-2	油泵从动齿轮	OIL PUMP DRIVER GEAR	1	
3	208-13-3	油泵内转子	OIL PUMP INNER ROTOR	1	
4	208-13-4	油泵外转子	OIL PUMP OUTER ROTOR	1	
5	D00C037	机油过滤网组件	OIL FILTER SUBASSEMBLY	1	
6	208-13-6	带盘螺栓	PLATE BOLT	1	
7	208-13-7	挡圈	SHIELD RING	1	
8	GB5783	带盘螺栓	BOLT WITH SALVER	1	
9	GB5783	带盘螺栓	BOLT WITH SALVER	2	
10	208-13-10	销轴	PIN BEARING	1	
11	208-13-11	销轴	PIN BEARING	1	
12	208-13-12	油泵盖	OIL PUMP COVER	1	
13	208-13-13	油泵轴	OIL PUMP AXIS	1	
14	208-13-14	定位销	ASSEMBLING PIN	2	
15	208-13-15	油泵体	OIL PUMP BODY	1	



序号 Ref. No.	零部件编码 Part No.	零部件名称	Description	数量 Quantity	备注 Remark
1	208G082	平衡轮	BALANCE WHEEL	1	
2	208-14-2	碟形垫圈	WASHER	1	
3	208-14-3	锁紧螺母	LOCK NUT	1	
4	208-14-4	纸垫	PAPER WASHER	1	
5	208-14-5	平衡轮盖	BALANCE WHEEL COVER	1	
6	208-14-6	螺钉M5	BOLT M5	4	

重庆银翔摩托车（集团）有限公司

CHONGQING YINXIANG MOTORCYCLE (GROUP) CO., LTD

地址：中国重庆渝北区空港经济开发区空港大道 822 号

ADD:NO.822,KONGGANG AVE KONGGANG ECONOMIC DEVELOPMENT ZONE YUBEI DISTRICT,
CHONGQING,CHINA

电话：0086-23-67183922 67183225

TEL:0086-23-67183922 67183225

传真：0086-23-67183000 67183111

FAX:0086-23-67183000 67183111

邮编：401120

POST:401120

网址：WWW.YINXIANG.COM.CN

WEB SITE:WWW.YINXIANG.COM.CN

电子邮件：INFO@YINXIANG.COM.CN

E-MAIL:INFO@YINXIANG.COM.CN